



Amite County Historical and Genealogical Society

Dawn Taylor, President

Wayne B. Anderson, Secretary

William G. Barron, Vice Pres.

N. Gay Blalock, Treasurer

Allen Terrell, Council-at-large

Wayne B. Anderson — Newsletter Editor

December 2015

Vol. 11, No. 12

Without a past, there is no future

Next meeting:

The next meeting will be the annual Open House. This year it will be at the William Gardner house in east Amite County. There are several differences in this year's plans so see the information on page 2

AMITE COUNTY HISTORICAL AND GENEALOGICAL SOCIETY

Minutes of the November 14, 2015 meeting

DRAFT

The draft minutes will be published in the January 2016 issue of the newsletter. Since there will be no business meeting in December, the adoption or correction of the minutes cannot be taken up until January.

Future Meeting Schedule

December 5, 2015 — Open House at the William Gardner House.

January 9, 2016 — Regular monthly meeting in the conference room of the library in Liberty, MS.

February 11, 2016 — Regular monthly meeting in the conference room of the library in Liberty, MS.

March 11, 2016 — Regular monthly meeting in the conference room of the library in Liberty, MS.

April 9, 2016 — Regular monthly meeting in the conference room of the library in Liberty, MS

May 1, 2016 — Regular monthly meeting in the conference room of the library in Liberty, MS

June 11, 2016 — Annual meeting with election of officers in the conference room of the library in Liberty, MS

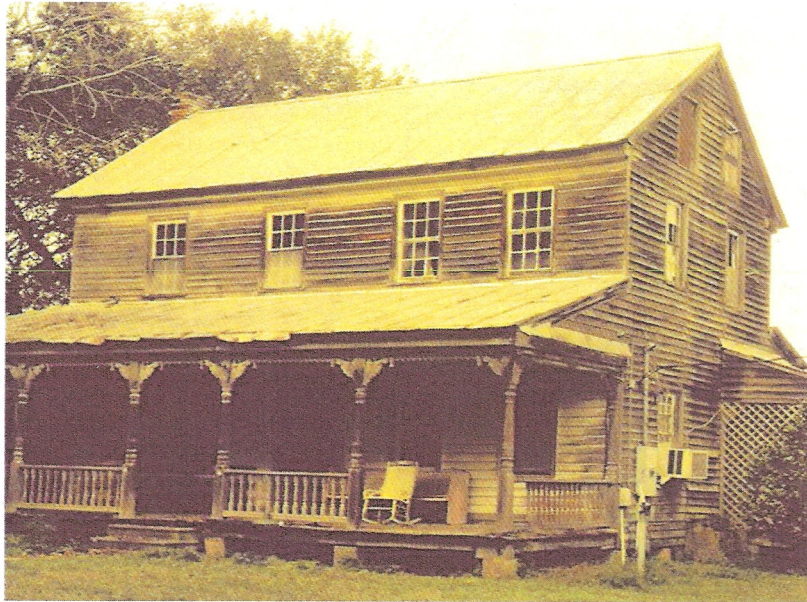
July 2016 — Traditionally the society has not met in July. If this should change, appropriate changes will be made in this schedule.

August 13, 2016 — Regularly monthly meeting in the conference room of the library in Liberty, MS

Contributions

If members have information they would like to contribute, please feel free to offer it by contacting me at one of the addresses shown in the box on page 2. I will not be able to accept/use just anything submitted. If information is sent by e-mail, it must be in the body of the message, in a *MS Word* document, or in a PDF document. If images of documents are sent they must be in JPG format so that I can attempt to convert them to text via an optical character reading application. If information is sent by postal mail, it should be in typewritten text, not handwritten, and should be a copy that doesn't have to be returned. Since about half our members receive the newsletter by print copy and the copying process will not adequately display photos, I cannot illustrate text write-ups. If photos are sent, do so only by electronic files in JPG format but don't assume the photos will appear in the newsletter. Photos sent in this manner may sometimes be put on the society's Facebook group page if they are likely to have wide appeal. I realize these criteria may prevent the sharing of some information; however, I must place some limits on the amount of time I devote to the newsletter each month since I have other projects including another monthly newsletter that I work on periodically.

**Old Natchez District
William Gardner/Parker
House 1815 to 1820**



**SATURDAY, 12/5/2015
10 AM TO 2 PM
CHRISTMAS OPEN HOUSE
AND TAG SALE**

The Amite County Historical and Genealogical Society is sponsoring this event, with the Sons of Confederate Veterans, Stockdale Rangers, Camp 1681, Summit working in conjunction. The home still has much furniture and items associated with the Gardner and Parker Families which will be sold that day. Federal lines with the gingerbread added late 1800's, one of the oldest homes standing in Amite County from this era, 2 1/2 floors early construction. You do not want to miss this tour and sale!!! A \$5 donation gets you access to all activities!

**An Old Fashioned
Infair!**

**Contents of house
to be sold!**

Live Music

**Bagpipes, Drums,
Fiddlers**

**House never
before opened to
the public!**

**Dub Brock to
perform at noon!!**

Admission \$5

Directions from Hwy 24.
Turn north onto East Fork
Road which becomes
North Greensburg Rd.
Continue past East Fork
Cemetery to Hebron Rd.
turn Left and Look for the
Balloons!

Map to the William Gardener House



Directions

From McComb / I55 Liberty Exit - Head West on 24 Highway - continue until turning right at The East Fork Baptist Church Sign on to East Fork Road which becomes North Greensburg Road, the road curves at the East Fork Baptist Church - continue the curve, East Fork Cemetery appears on the Right. Continue a mile or so and TAKE a left on Hebron Road balloons will be on sign, cross the Hebron Swamp / E.F. of Amite River, William Gardner House is to the right - sign or balloons will be out at house.

From Liberty- Head East on 24 Highway - continue until turning Left at The East Fork Baptist Church Sign on to East Fork Road which becomes North Greensburg Road, the road curves at East Fork Baptist Church - continue the curve, East Fork Cemetery appears on the Right. Continue on a mile or so and TAKE a left on Hebron Road balloons will be on sign, cross the Hebron Swamp / E.F. of Amite River, William Gardner House is to the right - sign or balloons will be out at house.

Annual Membership Contribution
Amite County Historical and Genealogical Society
PO Box 2
Liberty, MS 39645

Check or circle choice

- \$15.00 – Individual \$25.00 – Family \$50.00 – Sponsor or Ancestor Memorial
 \$200.00 – Lifetime \$150 -- Lifetime, couple 70+ age \$100 - Lifetime, 70+ individual
 \$10.00 – Student (under 18) \$10.00 – Senior (over 65)

All contributions are tax-deductible.

Please make checks or money orders payable to **Amite Co. Historical and Genealogical Society**.

(Please print)

Name: _____

Address: _____

City: _____ State: ____ Zip: _____ Zip+4: _____

Telephone(s): _____

E-mail address: _____

Thank you for joining the Amite County Historical and Genealogical Society. Your contribution helps us continue to collect and preserve historic treasures from Amite County's past, as well as to promote family history. Membership also provides an opportunity to attend programs and participate in special events.

I am interested in helping with:

- Archives Membership Programs Newsletter Other (specify):

**Amite County Historical and
Genealogical Society**
PO Box 2
Liberty, MS 39645